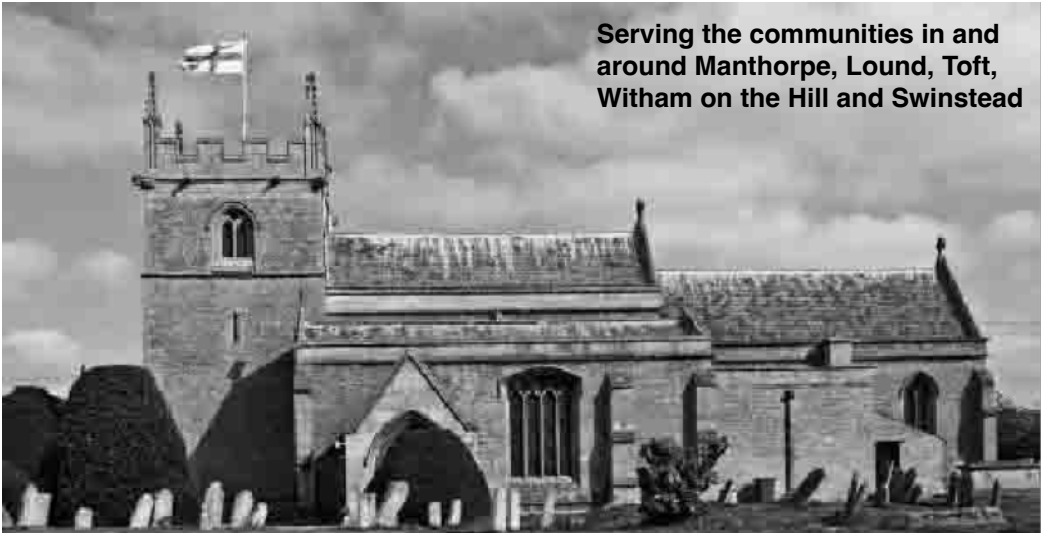


# The Three Towers

June 2025



**Serving the communities in and  
around Manthorpe, Lound, Toft,  
Witham on the Hill and Swinstead**





# **THRIVE**

## **CHIROPRACTIC**

We offer

**expert help**

for the following:

**headaches  
neck pain  
shoulder pain  
back pain  
sciatica  
hip pain  
knee pain  
poor posture**

We have developed a unique, gentle technique system that offers great results for our patients.

So if you've tried care elsewhere  
and it hasn't worked, then please  
get in touch to experience  
our unique approach for a unique you.

1 St Peter's Road, Bourne, Lincolnshire. PE10 9NF

**Tel: 01778 309 811**  
**[www.thrivechiro.life](http://www.thrivechiro.life)**

# MANTHORPE'S SWIFTS

Swifts have a migration route of 14000 miles, incredible for a bird that weighs the same as a Creme Egg. With an average lifespan of 8 years, that is 112,000 miles just to breed in our Parish! Arriving early May to leave mid-August.

Manthorpe's swift colony is thought to currently only nest in two roofs in the village, so, their 'home' is at risk if work is carried out to either house. Building work and the popularity of soffits have contributed to a loss of habitat, resulting in a 50% decline in swift numbers over the last 30 years.

Eating, drinking, sleeping on the wing, swifts only ever land to breed and don't breed until they are 2 or 3 years old. With a brood of 3 being the norm.

By financing 10 brand new swift nest boxes, your Parish Council has been very supportive in helping our colony to survive, and hopefully thrive, for future generations to enjoy. Eight have been placed around Manthorpe and two in Toft (to try to encourage a colony there). Thank you to the willing recipients offering suitable sites and to the Parish Council.

To enjoy our swifts doing their high-speed screeching displays, please head to Mill Farm and Glen House area during the evenings. Or just look high in the sky during the day to spot the silhouette of a swift moving boomerang.

Paul Toseland



# Parish News

**WELCOME** to Michael and Maria at Cleeve Acre, Witham on the Hill. We hope you will be very happy here.

**CONGRATULATIONS** to Anna and Rob from Witham on the Hill on the birth of their daughter Marla Olive Penelope.

**CONDOLENCES** to Tim, family and friends of Jane Fitzgerald who passed away on 3 May after a long illness. Jane and Tim lived in Witham on the Hill for many years but moved to Edinburgh a few years ago to be closer to family.

**VE CELEBRATIONS** Thank you to everyone who participated and helped set up and clear away after our grand event on the village green in Witham on the Hill. Thanks to Smuggler Jack for playing 2 great sets. Many thanks also to the wonderful tech students at Charlie's school who created a BBQ from an oil drum – it worked a treat. Two cakes, decorated with the Union Flag and poppies, were delicious. Well done Angela and Bev.

**FOOD BANK** Donations for the Bourne food bank continue to be collected in the porch of St Andrew's church. Please contribute if you can.

## Dates for your Diary

**Wednesday 4 and 18 June, 10.30am to 12pm – Swinstead Village Hall**

**Social Coffee Mornings.** Come and meet some new friends and enjoy some company, accompanied with coffee, tea, scones, cakes and bakes and a chance to win a great prize with one free raffle ticket, all for £3.00.

**Saturday 7 June 3pm - 5pm, Edenham Village Hall, Steam Action Members' Cream Tea.**

**Thursday 12 June 7.30pm St Andrew's Church, Witham on the Hill Music in Quiet Places.** This classical trio offers the viola, violin and accordion with a combination of tango, Gypsy and Balkan, plus music from the Far East. Tickets from SKDC Arts Centres.

**Saturday 14 June 7:30pm, summer concert – Grimsthorpe Castle. MUSIC DIVINE** is the title of this St Peter's Singers' very special summer concert. We

are teaming up with CELYS, the nationally acclaimed Consort of Viols, to present a wonderful programme of Early Music. Tickets £20 (£10 for under 16s) to include interval fizz and canapés, are available from Sue Nicholls 07913 296247 or suemusicconsultant@gmail.com

**Sunday 6 July Petanque, Pimms and Picnic the village green, Witham on the Hill.** Details to follow.

**Saturday 6 September 08:30 onwards - Steam Action 49th Annual Produce Show,** Edenham Village Hall. See schedule on pages **xx - xx**

**Saturday 13 September, 3pm to 7pm - Swinstead Village Hall.** What better way to enjoy an afternoon out with the family, taste some lovely home baked cakes and refreshments, along with trying your hand at Skittling – lots of fun for the kids and adults! All in aid of raising monies for Macmillan Cancer Research & Support Charity. Best of Day Knockout will win £100 worth of Pork ready for the freezer, amongst other Piggy fun prizes. Swinstead Village Bar will be open from 3pm and refreshments and cakes are available.

**Retreat Days for 2025 - Edenham Retreat House. All are 10 am to 4pm**  
Bring your own lunch - £16/person. Bookings: email: edenhamoffice@gmail.com or by telephone: 01778 591358

**Saturday 21 Jun, 'Towards the Lamp Post: Exploring Narnia'** with Dr Jem Bloomfield.

**Saturday 5 July – ‘And on the seventh day... an exploration of rest and Sabbath’** with Canon Rowena King, Canon Missioner at Lincoln Cathedral.

**Saturday 9 August - 'Benedictine Spirituality for 21st century Christians: What Dom Gregory Dix can teach us today'** with The Very Rev Dr Simon Jones, Dean of Lincoln

**G PLEWS  
GARDENING SERVICES**

- *Hedge & bush cutting*
- *Mowing*
- *Pruning*
- *Bed planting & advice*
- *Small-medium trees felled*

Offering a personal service  
No job too small  
RHS trained  
Fully insured  
Ring **01778 590579** evening  
Or **07999 649824** day



**TAXATION /  
PROBATE  
SERVICES**

All aspects of Personal Taxation,  
Self-Assessment, Inheritance Tax, Probate,  
Capital Gains Tax, HMRC Enquiries Etc.  
Over 30 years' experience:  
Professionally Qualified • Very reasonable rates:  
**Martin Smith Associates 07815 921143**  
[MartinSmithAssociates@yahoo.co.uk](mailto:MartinSmithAssociates@yahoo.co.uk)

**PAINTER AND DECORATOR**  
  
**OVER 10 YEARS OF EXPERIENCE**  
  
**REFERENCES AVAILABLE**

**JASON KENDALL**  
**01778 426 409**

Are you seeking  
*Homecare Support?*  
We are here to help!



**Clarity**  
Homecare  
*Boston*

The range of services we offer

Personal Care	Shopping Assistance
Home Help	Night Care
Companionship	Dementia Care
Respite Care	Palliative Care
Live-in Care	Hospital Discharge

For a free assessment  
give us a call on:



[www.clarityhomecare.co.uk/boston](http://www.clarityhomecare.co.uk/boston)

**01205 386 086**

# The Vicar Writes

What does love look like? In St John's Gospel Jesus says to his disciples "A new commandment I give to you, that you love one another: just as I have loved you, you also are to love one another. By this all people will know that you are my disciples, if you have love for one another" (John 13.34-35). In Latin this is rendered 'mandatum novum' from which we get Maundy Thursday (i.e. 'mandatum novum Thursday' or 'new commandment Thursday'). In many ways this request was nothing new or remarkable. Leviticus 19.18 tells us that we are to "love your neighbour as yourself." What's different here is that we are to love one another following the example of Jesus; to love without qualification, to love gladly and humbly, be we friend, neighbour or foe.

Jesus' charge and challenge to his disciples is clear: they are to love one another as he has loved them. His life, death, and resurrection now define what love looks like. Anyone who claims to be a disciple of Jesus will show this clearly in the way that they live and the way that they love. The third-century Christian writer Tertullain recorded that the Pagans said of the early Christians "See, how they love one another! How they are ready to die for one another!" If only the modern-day sceptics, atheists and agnostics thought the same!

Love was and remains the mightiest force in all the world. When you look at the rapid growth of the early Church in the ancient world, you can see it for yourself. If contemporary Christianity appears weak and ineffectual by comparison, it's not because we've run out of ideas (or because the devil now has all the best



# Jeeves Catering

Specialists in Wedding, Corporate & Private Catering

With two decades of experience, Jeeves Catering is a family-run, comprehensive catering and event planning service that excels in delivering exceptional on-site catering for corporate functions, weddings and private gatherings.



Our passion lies in crafting delightful canapés, elegant dinners and sumptuous buffets, alongside planning and coordinating stunning weddings, business events and intimate celebrations. We take pride in selecting premium ingredients, focusing on seasonal produce and supporting local suppliers whenever possible.

Jeeves brings a bespoke approach to every event, from company launches to weddings, birthday parties, christenings, cocktail soirées, barbecues, classic afternoon teas or picnics. Browse our complete menu selection on our website.

01778 349 512 • [info@jeevescatering.com](mailto:info@jeevescatering.com) • [www.jeevescatering.com](http://www.jeevescatering.com)

## Drinking

Mon Closed

Tues 17:00-23:00

Weds 12:00-23:00

Thurs 12:00-23:00

Fri 12:00-23:00

Sat 12:00-23:00

Sun 12:00-20:00



## Eating

Weds - Sat 12:00-14:30

and 17:00-20:30

Sun - 12:00-17:00

To book a table at our restaurant, simply give us a call at 01778 428621.

Our friendly staff will be happy to assist you in reserving a table for your desired date and time.

We look forward to seeing you soon!



[fivebellsinn\\_edenham](https://www.instagram.com/fivebellsinn_edenham)



[www.fivebellsinnedenham.com](http://www.fivebellsinnedenham.com)



[facebook.com/FiveBellsInnEdenham](https://www.facebook.com/FiveBellsInnEdenham)



tunes). It's because we've forgotten how to love. It's not that we've forgotten how to be nice to people (or even to each other). Jesus himself reminded us that even the most terrible people know how to treat members of their own family with love and generosity.

No, the problem is that we don't love as Jesus loved. Christian love (loving after the example of Christ) means sacrifice. Sacrifice is what lies at the heart of it. Sacrificial love is what wins hearts and minds. Comfortable and convenient love won't conquer anything. It just won't. The challenge then is to love in such a way that you 'feel the pinch' (but don't 'count the cost'). It's the love that costs but doesn't feel burdensome. We all know what it feels to love like that. We've probably all gone out of our way to show love to our family members, children or spouses. We give without counting the cost and, rather than drag us down, it feels exhilarating, it feels authentic, right and just.

When we can love like that each and every day, then change and progress will inevitably happen, good things will come and the love of God in Jesus can be seen and appreciated. It's nothing new, but it may well cost us everything, "love one another: just as I have loved you."

Fr Edward

T.R. CARLTON  
INDEPENDENT FAMILY  
FUNERAL DIRECTORS

Giving a complete 24 hour  
personal service by  
caring and dedicated staff

PRIVATE CHAPEL OF REST  
TEL Bourne: 01778 422240

## **Witham on the Hill Parish Meeting Chairman's Annual Report – 12th May 2025**

As usual, my thanks to all Councillors for their support during the last twelve months and I would also like to thank Councillors Charlotte Vernon and Penny Robins for their support to our community at County and District levels respectively.

Changes to the Parish Council this year have seen the departure of Councillor Sue Pennant-Jones, who was our longest serving Parish Councillor, and to whom we extend our sincere thanks. Dave Haydon has made a big contribution, providing planters around the village and, among other things, orchestrating the silhouettes for Remembrance Day, so, we were happy to welcome him onto the Parish Council.

The May local government elections witnessed the biggest change to the political landscape at local level that we have perhaps seen for a generation or more, with Reform virtually replacing the Conservative majority on the County Council. Happily however, our County Councillor, Charlotte Vernon retained her seat for Colsterworth Rural Division, which we come under. Another significant change imposed by central government as part of it's policy of devolved regional government, has been the creation of a Mayor for the Greater Lincolnshire region to which Dame Andrea Jenkyns (Reform) was duly elected.

Planning applications we have been asked to comment on over the last twelve months have, as usual, mainly related to arboreal work, with the exception of an application to build a single dwelling between Greystones and the Anvils opposite the Green. The Parish Council's reservations were recorded with SKDC who initially refused consent. However, a revised application was submitted which has very recently been approved. We look forward to welcoming Jess and James Tarver back to the village in due course.

The Stocks, our village landmark, is looking rather dejected, surrounded as it is by a protective screen. A concerned resident was worried that the struts supporting the roof might collapse and raised this with the Clerk, who asked SKDC to investigate. Although this did not reveal any cause for immediate concern, nevertheless protective measures were put in place. Ultimate responsibility for this listed landmark has been a cloudy issue for many years but we are encouraged by current indications that some remedial work will be carried out by SKDC in the near future.

It is worth noting that the new car park for the Six Bells has now been in operation for nearly a year. Despite resident's initial reservations, this has by

and large been a complete success in reducing the on street parking by patrons to practically none.

The deteriorated state of Bottom St, with continuous water overflow from the drain pots and significant potholes, has finally been addressed by LCC Highways. Work was carried out earlier this year to modify and extend the drainage system and also resurface a section of the road. This appears to have been successful although there is still a degree of surface degradation in need of repair.

The reactive speed sign continues to provide a helpful reminder to motorists to check their speed through the village. It has also demonstrated that there are still relatively few instances of significant speeding, despite the considerable reduction in on street parking.

Cllr Paul Smith represented the Parish Council and laid the wreath at the Remembrance Sunday service in St Andrew's Church last November. Our thanks to Dave Haydon whose 'Tommy' silhouettes were deployed very successfully for the first time.

I conclude by wishing everyone well and my thanks to Bernard for his help and advice during the last twelve months.

Charles Henriques Chair Witham on the Hill Parish Council 12/05/25



**We now sell fruit & veg**

## **Farm Shop**

### **Opening times:**

**Thursday: 9am till 5pm**

**Friday: 9am till 5pm**

**Saturday: 9am till 5pm**

**Sunday: 10am till 2 pm**

**(Closed Monday, Tuesday & Wednesday)**

**Red Tractor Farm Assured  
All from our farm**

**Lincoln Red Beef, Berkshire Pork  
& Jacob Lamb**

**Dry aged beef & homemade ready meals  
Farm fresh eggs, local milk, cheese, honey & much more**



## ***SECOND TO NONE PEST CONTROL***

**RATS  
MICE  
MOLES  
WASPS  
BEES  
SQUIRRELS  
FLEAS**

**COMPLETE PEST CONTROL SERVICES  
FAST EFFICIENT AND FRIENDLY  
FOR FREE QUOTES AND CONSULTATIONS  
MATTHEW AVISON**

**01778 369192 07880558687**

**[stnpestcontrol@gmail.com](mailto:stnpestcontrol@gmail.com)**

**ANTS  
PIGEONS  
MOTHS  
WOODWORM  
FOX CONTROL  
BIRDPROOFING  
BEDBUGS**

## **RBL Decorators**

For all of your interior and exterior decorating needs, from one room to a whole house, our team can help.

Domestic/Commercial/  
New Builds/Wood

restoration and repairs  
Fully insured with 35

years of experience.  
We can transform your

space cleanly and efficiently

For all enquires  
call Richard on 07759250424

or email  
**[RBLdecorators@gmail.com](mailto:RBLdecorators@gmail.com)**



## ***CLEAN AND CLEAR CHIMNEYS***

**[www.cleanandclearchimneys.co.uk](http://www.cleanandclearchimneys.co.uk)**

Professionally trained clean and friendly sweep service

Full brush and vacuum cleaning, also bird & nest removal

Industry standard certificate of sweeping supplied

Flexible flue liners supplied & fitted

Bird guards, rain guards, caps & cowl supplied & fitted

Replacement pots & minor chimney repair work

Wood burning/Multifuel stoves supplied and fitted

Hetas registered installer

Covered by full public liability insurance

**Call Paul on Tel: 01406 702005**

**Mobile: 07766886417**



## **Do you need the support of a Carer/Home help?**

Experienced NVQ qualified carer available  
for work including short term live-in  
DBS checked, excellent references  
Liability Care insurance

**Contact: Debbie**

**Tel: 01780 481356 Mobile: 07716 719329 Email: [debswelton@yahoo.com](mailto:debswelton@yahoo.com)**



# The Greatford Cut

Few would disagree that one of the worst catastrophes that can happen is to be flooded out of house and home. For the residents of the village of Greatford this has occurred not just once but many times. Records of the locality for the last 100 years show that the village has suffered frequently from this misfortune. At times there was two feet of water in the post office and beer barrels were floating in the cellar of the Hare and Hounds public house.

The cause is the River West Glen which flows through the village. Measurements have shown that the river level can rise by 9 or 10 inches for every quarter inch of rainfall in the river's catchment area. Rising near Old Somerby east of Grantham, the West Glen flows almost due south to just upstream of Greatford, it then turns north east to Wilsthorpe where it joins the River East Glen to form the River Glen which eventually flows into the River Welland just past Surfleet.

In an attempt to alleviate the flooding problem the Greatford Cut was constructed in the early 1950s. The Greatford Cut is an artificial canal going from the River West Glen at Greatford across open country to flow into the River



Welland just west of Market Deeping. (Pictured below is the canal looking north from the Market Deeping end).

The route starts at the sluice gate south-west of Greatford just past the Hare

**Do you want the fairies to  
clean your oven?  
Or would you rather do it  
yourself?**

Prices start  
from just  
**£42.00**

- Your ovens cleaned like new
- Family owned business
- Ovens, Ranges, Agas, Hobs, Extractors, Microwaves, Fridges, Freezers, Dishwashers & BBQs
- No mess, odour or toxic products used in your home so the oven can be used straight after cleaning
- Fully equipped & insured specialist vehicles with dedicated cleaning equipment for removal of grease, fat and burnt on carbon.
- Appointments to suit you **24 hours a day, seven days a week.**

**01572 767678  
07785 987112**

[www.ovenfairy.co.uk](http://www.ovenfairy.co.uk) (book online)



**Go on, call the fairies and treat your oven**

**LITES PC**



mention this 3 towers ad for 10%  
discount on labour charges

**IT Support,  
Sales &  
Training for  
home & small  
businesses**

Service, Repairs,  
Training and Sales for...

**Desktop PC  
Laptop PC  
Tablet PC  
Tablets  
Wireless Networks  
Wired Networks  
Smart Phones  
Smart TVs**

Design, Management,  
Setup & Training for:

**Web Design  
Website Admin  
eCommerce  
Blogging  
Social Media  
Backups  
Cloud Storage  
Email**

Help and assistance with managing your email, data and  
IT across multiple devices and networks.

**01476 550604 / 07894 659479**  
[taff@lovesey.net](mailto:taff@lovesey.net)

**Careby Garage**

**Motorcycle & Car MOT testing  
Air conditioning & tyres  
car servicing & repairs**

**Stamford Road, Careby  
Stamford, Lincs, PE9 4EA**

**01780 410703**

**Too dearly  
loved to be  
forgotten . . .**



**Special Memorials for Special People**

**Tel: 01778-421680**  
[www.setinstonememorials.co.uk](http://www.setinstonememorials.co.uk)

**Set-in-Stone  
MEMORIALS**

Office & Showroom:  
**3 PINFOLD ROAD, BOURNE, LINCOLNSHIRE - PE10 9BU**

**K GOLDSMITH  
PAINTER AND DECORATOR**

**All aspects of interior and exterior painting for the home and business**

**NO JOB TOO BIG OR SMALL**

**Free no obligation quotes. Fully insured & registered.**

**References/Testimonials available**



**01778 704072**



**07951 579167**

[www.kgpainting.co.uk](http://www.kgpainting.co.uk)

and Hounds and Greatford Hall. It flows in a generally south-east direction, beneath the road north-east out of Barholm, until Tallington Lakes. Then it turns north-east alongside Tallington Lakes, then beneath King Street, proceeding north-east until it turns south-east to flow beneath the A1175 to the Welland. The Cut is roughly four miles in length. The Ordnance Survey Landranger map, sheet 142, shows the route.

I was fortunate to obtain a document, dated 1957, entitled The River Welland Major Improvement Scheme. The document states that the scheme was first approved and initiated by the River Welland Catchment Board in 1944. It was designed and supervised throughout by Mr. E. G. Taverner, the Board's Chief Engineer. Amongst other works it involves construction of the Greatford Cut from Market Deeping to Greatford to take the surplus flow from the River Glen at Greatford in flood periods and relieve the danger of breaches in the Glen banks from Kates Bridge to Surfleet. After extensive surveys it was found that a channel could be cut across country by following the boundaries of the fields as far as possible from Molceys Mill, Market Deeping, to the West Glen at Greatford. This cut consists of a shallow embanked channel varying from 24 to 17 feet wide with four road bridges and a control sluice at Greatford. The channel will be operated in flood periods to discharge the flood waters of the Glen which in the past have caused considerable flooding at Greatford, Wilsthorpe and Stowe Corner and over a great deal of arable land near King Street and the Baston area. The total cost of the entire scheme including the Greatford Cut was £723,000, a large sum in those days.

The Greatford Cut was generally effective but did not save the village when Storm Henk hit in January 2024. Severe flooding was caused by almost a month's rainfall in a few days following a wet autumn in 2023. In Greatford burst river banks affected 29 homes and some residents spent the night in a rest centre and others stayed with friends. Two people had to be rescued from their home in the village by firemen using a boat. One lady who was rescued said



she had lived in Greatford for more than 50 years and it was the first time her home had been flooded.

The Greatford Cut can be viewed at any of the bridges it crosses except possibly on King Street which is a well-used, quite busy road where there is nowhere to park. At the Market Deeping end there is a useful lay-by and footpaths either side of the channel, popular with runners and walkers, the latter with or without dogs. Perhaps it is not a particularly stunning sight to see, the Panama Canal it isn't, but an addition to our beautiful landscape and a life-saver for the residents of Greatford.

Dick Mundy



W.H. Munton and Son

### **Mill Farm Butchers**

*A long-established, traditional butchers shop at the heart of the community - offering a wide range of home fed and locally sourced meat and poultry plus so much more.*

*Homemade sausages and burgers ~ Homecooked ham and haslet ~ Pork pies*

*Cheeses, butter, local eggs and honey, and many other delicious locally produced goods – now including fresh bread and seasonal vegetables!*

Open:

Tuesday & Wednesday 8 – 1 & 2 – 5, Thursday 8 – 1 & 2 – 6,  
Friday 7.30 – 1 & 2 – 6, Saturday 7.30 – 1

E: [orders-millfarm@hotmail.co.uk](mailto:orders-millfarm@hotmail.co.uk)

T: 01778 590 263

*Manthorpe, Bourne, Lincolnshire. PE10 0JE.*



## CUSTOMLAWNCARE

PROFESSIONAL LAWN TREATMENT

Spring & Summer,  
Autumn & Winter  
Treatments for your  
lawn at a price that  
doesn't cost the earth.

FOR A FREE QUOTATION  
CALL US ON:

**07734 693253**



Organic  
fertilisers



Weed & Moss  
control



Turf pest  
control



Scarification  
& Aeration

- Weed and moss control
- Scarification
- Hollowtine aeration
- Fertilisation

*Your local professional  
lawn treatment service.*

Andrew Carr

T: 07734 693253 E: [andy@customlawncare.co.uk](mailto:andy@customlawncare.co.uk)

[www.customlawncare.co.uk](http://www.customlawncare.co.uk) |

Stamford Lincolnshire



**TommyPlummer**  
TREE SERVICES

TREE CARE Pruning, Felling, Dismantling, Planting

CONSULTANCY Reports, Hazard Assessment, BS5837

City &  
Guilds  
NPTC  
Qualified

01780 460 111 • 07958 648 883

[www.tpts.co.uk](http://www.tpts.co.uk)



# **Steam Action**

## **49<sup>th</sup> Annual Produce Show**

Saturday 6<sup>th</sup> Sept. 2025 | Edenham Village Hall

Who can enter?

Residents of the parishes served by The Three Towers

Relatives of those who live in Edenham Parish

Eligible members of Steam Action

Pupils of Edenham School, Grimsthorpe Castle Day Nursery & Pillarwood Farm Pre-School

### **SECTION A – FLOWERS** (Grown by the exhibitor for at least 2 months)

- 1 One rose (any variety)
- 2 Vase of six roses (any variety)
- 3 Vase of mixed flowers cut from open border (any variety)
- 4 Tallest Sunflower (judged on premises)
- 5 Flowering pot plant
- 6 Vase of five dahlias
- 7 Vase of five chrysanthemums
- 8 Foliage pot plant
- 9 Hanging basket (judged on premises)
- 10 Cactus or Succulent

### **SECTION B – DECORATIVE** (Completed in the last 12 months)

- 11 Arrangement of flowers (not to exceed 24" overall)
- 12 Button hole used for a wedding (man or woman)
- 13 Pressed flower (A5 size)
- 14 A flower or foliage arrangement in an unusual container
- 15 Decorative door wreath (12" diameter)
- 16 Decorative headdress
- 17 One vegetable and one bloom (open to any interpretation)
- 18 Greenery arrangement not to exceed 18" overall

### **SECTION C –FRUIT AND VEGETABLES** (Grown by the exhibitor for at least two months)

- 19 Box of mixed vegetables (maximum box size 18" x 12")
- 20 Cucumber
- 21 Three potatoes any colour
- 22 Three quality carrots with 3" tops
- 23 Pepper (any variety)
- 24 Three onion sets (cut and tied)
- 25 One large onion (cut and tied)
- 26 Three greenhouse tomatoes
- 27 Three pods of runner beans
- 28 Unusual shaped, or sized, fruit or veg

- 29 Pair of marrows, courgettes, squash or pumpkins
- 30 Five shallots
- 31 Three beetroot with 3" tops
- 32 Tied bunch of three herbs
- 33 Three dessert apples
- 34 Three cooking apples
- 35 Bowl of dessert fruit

SECTION D – HOMEMADE (Completed in the last 12 months, wrapped in Clingfilm)

- 36 Homemade beverage in a bottle (alcoholic or non-alcoholic)
- 37 Jar of curd any flavour (must have cellophane top)
- 38 Jar of jam any flavour (must have cellophane top)
- 39 Jar of marmalade any variety (must have cellophane top)
- 40 Jar of chutney any variety (must have cellophane top)
- 41 6 cheese straws (any size)
- 42 Victoria sponge (jam filled, sprinkled with castor sugar)
- 43 Victoria sponge baked by a man (jam filled, sprinkled with castor sugar)
- 44 Six squares of flapjack
- 45 Lemon meringue pie (foil container)
- 46 Four fruit scones
- 47 One rich fruit cake
- 48 Savoury quiche in foil container
- 49 Apple pie in foil container
- 50 Loaf of bread (any size)
- 51 Decorated chocolate cake
- 52 Banana cake- "Bake off cake" (see recipe on last page)
- 53 Five pieces of shortbread
- 54 Five decorated cupcakes
- 55 Five pieces of lemon tray bake
- 56 Six sausage rolls

SECTION E – HANDICRAFTS (Completed in the last 12 months)

- 57 Drawing or Painting (oil or watercolour)
- 58 Sewing machine item
- 59 Wood crafted item
- 60 Hand knitted or crocheted item
- 61 Item of patchwork
- 62 Wind chime (any size)
- 63 Article of embroidery or cross stitch
- 64 Veg & Produce Show themed bunting flag (any material, triangle, A5 size)
- 65 Upcycled/recycled item (include the item origin and what it has transitioned into)
- 66 An item of homemade jewellery

## SECTION F – CHILDREN Under 7 years (key stage 1)

- 67 Item of cookery
- 68 Vegetable model
- 69 Self Portrait- (any media) (A4 max)
- 70 Miniature Garden (maximum size 12" x 18". Traditional or modern. Be creative!)
- 71 Home grown fruit, flower or vegetable
- 72 Veg & Produce Show themed bunting flag (any material, triangle, A5 size)

## SECTION F - CHILDREN 7 – 15 years ( key stage 2 -4 )

- 73 Item of cookery
- 74 Vegetable model
- 75 Self Portrait (A4 max)
- 76 Miniature Garden (maximum size 12" x 18". Traditional or modern. Be creative!)
- 77 Home grown fruit, flower or vegetable
- 78 Veg & Produce Show themed bunting flag (any material, triangle, A5 size)

## SECTION G – PHOTOGRAPHY (Taken in the last 12 months - maximum size 7" x 5")

- 79 Funny photo
- 80 Bridges
- 81 Sunrise or sunset
- 82 Farming
- 83 Triangles

## SECTION H – DISASTER

- 84 Planned entry that ended in disaster

### Show Rules

1. Children may enter any class, but this must be clearly stated at time of entry.
2. The organisers reserve the right to alter or omit any classes.
3. Care will be taken to safeguard exhibits, but the organisers cannot be responsible for loss or damage, or for exhibits left after 3.30pm on the day of the show.
4. "Not for sale" cards are available on request and should be placed with any item entered but not for the auction.
5. The judge's decision is final.
6. Bunting in E64, F72 and F78 is to be kept and hung at future shows.

## SECTION D – HOMEMADE Class 52. Bake off cake recipe

### **Cake**

- |                                |                        |
|--------------------------------|------------------------|
| 345g mashed bananas            | 375g all purpose flour |
| 1 tsp baking powder            | 1 tsp baking soda      |
| ½ tsp ground cinnamon          | ½ tsp salt             |
| 170g unsalted butter           | 200g granulated sugar  |
| 100g light or dark brown sugar | 3 large eggs           |
| 2 tsp pure vanilla extract     | 360ml buttermilk       |

### **Cream Cheese Frosting**

- |                                  |                            |
|----------------------------------|----------------------------|
| 226g full fat brick cream cheese | 113g unsalted butter       |
| 360g confectioners' sugar        | 1 tsp pure vanilla extract |

# **Willoughby Memorial Trust Gallery**

Moreley's Lane, Corby Glen, NG33 4NL

12 – 5 pm. Tuesday – Sunday

ADMISSION FREE

Two exhibitions open on

Wednesday **18 June** and run until Wednesday **9 July**

## ***Cornucopia***

Mixed media paintings

Sharon Sycamore

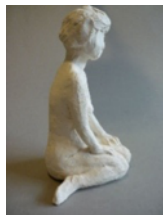
**Sharon Sycamore** draws on and is inspired by the natural world which is re-imagined in vibrantly colourful and textured mixed media pieces. They have a real sense of history through the inclusion of collaged vintage ephemera, recycled materials and found objects.



## ***Clay Bodies***

Human and animal forms in fired clay

Joanna Howard



**Joanna Howard** has two different approaches to work in clay, stylized, still forms and gestural, expressive ones. The type of clay she uses dictates the outcome; usually the coarser, grainy clay produces simpler forms, the smoother, stoneware clay forms with more movement.

[www.willoughbygallery.com](http://www.willoughbygallery.com)

# WITHAM'S FUN RUN

## MAKING EVERY SPLASH COUNT

Witham Hall School's annual Fun Run was once again a huge success, bringing together families, pupils, and staff for an afternoon full of energy, sunshine, and generosity. Organised by the Friends of Witham, this much-anticipated event raised vital funds for The Willoughby Foundation - an academy in Bourne that supports children with complex Special Educational Needs and Disabilities (SEND). The school grounds buzzed with excitement and a lively DJ soundtrack, as runners dashed toward either a wet or dry finish line, with spectators waiting eagerly, armed with water pistols!

The JustGiving page is still open—so if you would like to donate, there's still time to support this wonderful cause!

<https://www.justgiving.com/page/witham-hall-fun-run-2025>



# Jane's Seasonal Recipe

*This is Philippa Walton's recipe which was very popular at Witham on the Hill's Puddings in the Parish Hall recently.*

## **Apple and Salted Caramel Crumble**

*110g wholewheat flour  
110g porridge oats  
150g soft light brown sugar  
75g soft butter  
1 teaspoon baking powder  
grated zest of lemon*

Put flour, oats and baking powder in bowl. Rub in flour until crumbly. Add sugar and lemon zest, mixing well.

Apple and caramel:

50g butter  
6 tart eating apples (eg Cox or Braeburn) peeled, cored and roughly chopped  
175g caramel sauce (from supermarket, or make you own with recipe found on [www.bbcgoodfood.com](http://www.bbcgoodfood.com))

Melt butter in large fry pan. Add apples and cook gently until softened (5-8 mins). Spoon apple into dish and generously dot over salted caramel. Sprinkle over the crumble mixture and bake at 180°C or gas mark 4 for 25 mins until crumble is cooked.

Serves 6

## Parish Services for June 2025

	Swinstead	Witham	Edenham	Bythams
1 June Easter 7		9.30am Parish Eucharist	11.15am Parish Eucharist  4pm Evensong (Grimsthorpe Chapel)	9.30am Parish Eucharist (Castle Bytham)
8 June Pentecost	9.30am Parish Eucharist	9.30am Parish Eucharist	11.15am Parish Eucharist  4pm Evensong (Grimsthorpe Chapel)	6pm Parish Eucharist (Careby)
15 June Trinity Sunday		9.30am Parish Eucharist	11.15am Parish Eucharist  4pm Evensong (Grimsthorpe Chapel)	9.30am Parish Eucharist (Creeton)
22 June Corpus Christi / Trinity 1		11.15am Confirmation Parish Eucharist	4pm Evensong (Grimsthorpe Chapel)	9.30am Parish Eucharist (Little Bytham)

For Baptisms, Weddings, Banns of Marriage, Confessions or any other pastoral or spiritual need, contact: The Revd Fr Edward Martin SSC 01778 591358 - [Edward.Martin@lincoln.anglican.org](mailto:Edward.Martin@lincoln.anglican.org)